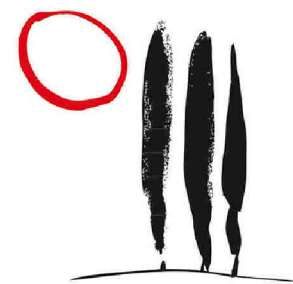


escala : 1/50



Europea de Viviendas

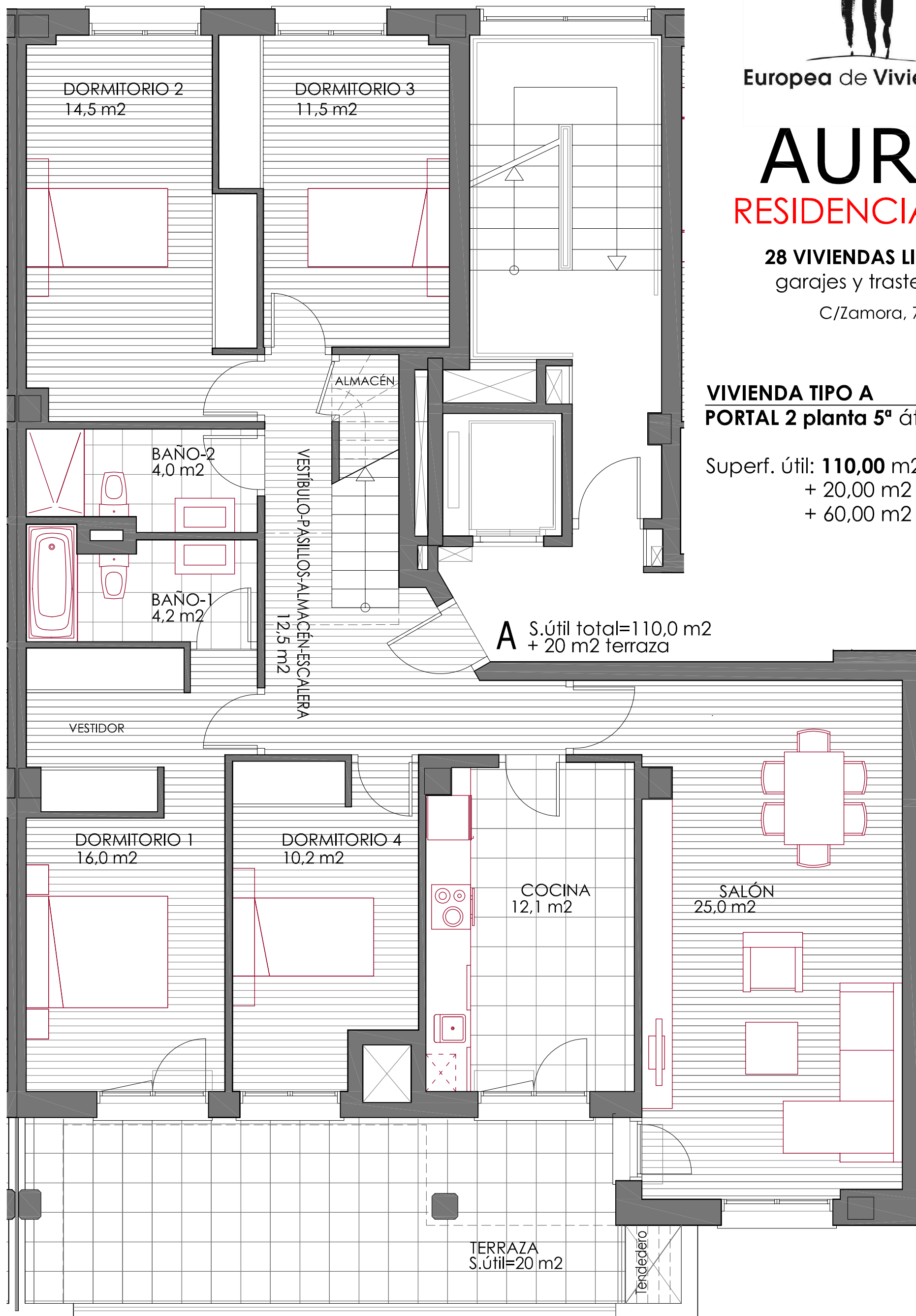
AURA RESIDENCIAL III

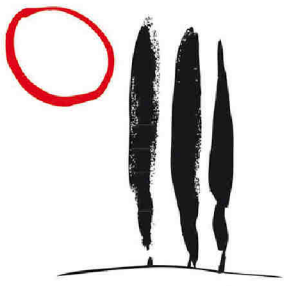
28 VIVIENDAS LIBRES
garajes y trasteros

C/Zamora, 7

VIVIENDA TIPO A
PORTAL 2 planta 5^o ático

Superf. útil: **110,00 m²**
+ 20,00 m² terraza
+ 60,00 m² solarium





Europea de Viviendas

AURA

RESIDENCIAL III

28 VIVIENDAS LIBRES
garajes y trasteros

C/Zamora, 7

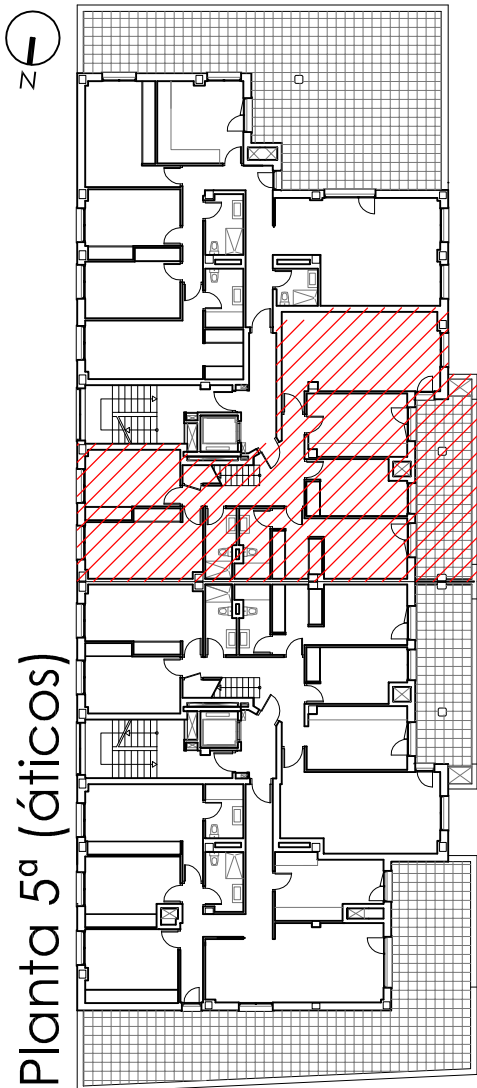
VIVIENDA TIPO A

PORTAL 2 planta 5º ático

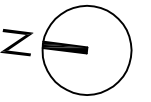
Superf. útil: **110,00 m²**

+ 20,00 m² terraza

+ 60,00 m² solarium



Planta 5º (áticos)



escala : 1/50

